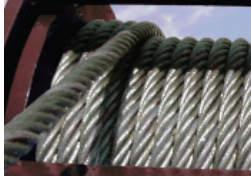


CH165A Construction Hoist

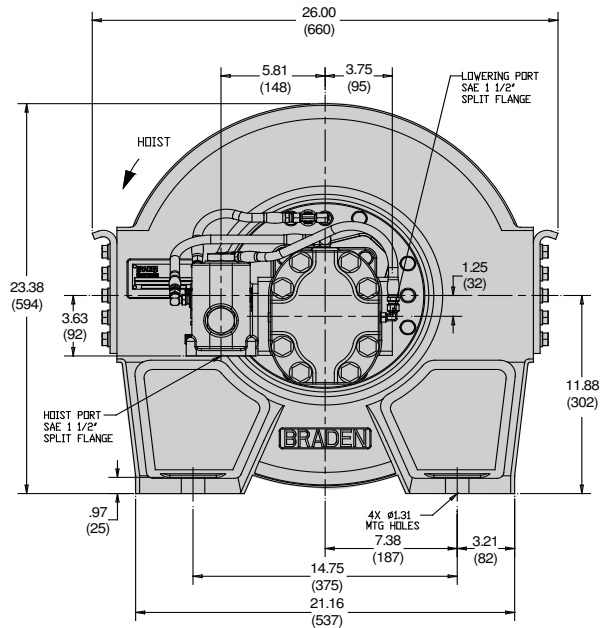
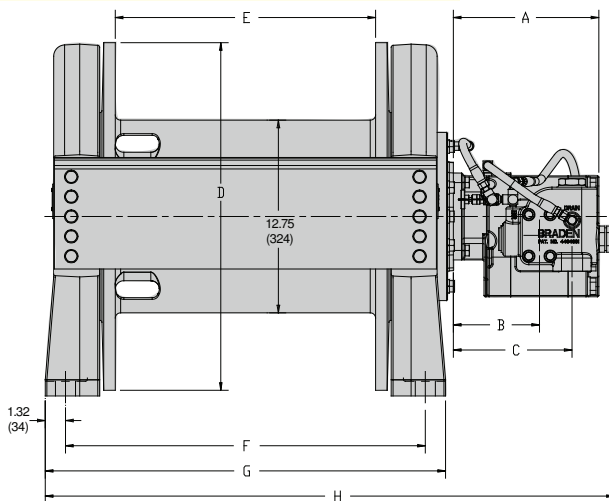
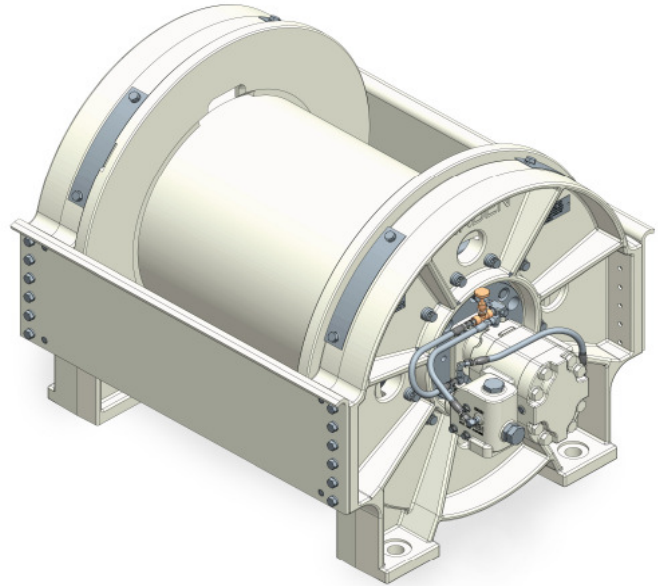
16,500 LB Capacity

BRADEN
PACCAR WINCH DIVISION



Standard Features:

- Multi-disc spring applied, hydraulically released brake to hold the load even if a hydraulic line breaks
- Anti-friction bearings used throughout to maximize efficiency
- Brake valve for smooth performance
- Full load wire rope anchor
- High efficiency motor



	01 Drum		02 Drum		090 Motor	
	110 Motor	120 Motor	110 Motor	120 Motor	090 Motor	090 Motor
	in.	mm	in.	mm	in.	mm
A	9.50	241	9.75	248	9.00	229
B	5.63	143	5.75	146	5.38	137
C	7.75	197	7.88	200	7.50	191
D	23.00	584	23.00	584	22.75	578
E	17.00	432	17.00	432	32.00	813
F	23.50	597	23.50	597	38.50	978
G	26.14	664	26.14	664	41.14	1,050
H	37.16	944	37.29	947	51.91	1,320



PACCAR WINCH DIVISION
P.O. BOX 547 BROKEN ARROW, OK U.S.A. 74013
PHONE (918) 251-8511 FAX (918) 259-1575
www.paccarwinch.com

Copyright 2006 PACCAR Inc
All Rights Reserved

LIT-2264 R2
07-2007

Specifications

CH165A-25090-01

9.02 cu in. Motor (148 cc)
3,000 PSI (206 bar) @ 125 gpm (473 lpm)
Wire Rope Diameter: .75 in.

	LINE PULL		LINE SPEED	
	LB	KG	FPM	MPM
1	11,970	5,441	416	127
2	10,770	4,895	462	141
3	9,790	4,450	508	155
4	8,980	4,082	555	169
5	8,290	3,768	601	183
6	7,700	3,500	647	197

CH165A-25110-01

11.0 cu in. Motor (181 cc)
3,000 PSI (206 bar) @ 155 gpm (587 lpm)
Wire Rope Diameter: .75 in.

	LINE PULL		LINE SPEED	
	LB	KG	FPM	MPM
1	15,040	6,836	429	131
2	13,530	6,150	477	145
3	12,300	5,591	525	160
4	11,280	5,127	572	174
5	10,410	4,732	620	189
6	9,670	4,395	668	204

CH165A-26064/128-01 Two Speed Motor

6.38 cu in. (105 cc) Low Speed 12.75 cu in. (209 cc) Low Speed
2,800 PSI (191 bar) @ 85 gpm (322 lpm)
Wire Rope Diameter: .75 in.

	HIGH SPEED				LOW SPEED			
	LB	KG	FPM	MPM	LB	KG	FPM	MPM
1	6,360	2,891	391	119	16,500	7,500	181	55
2	5,720	2,600	435	133	14,850	6,750	202	62
3	5,200	2,364	478	146	13,500	6,136	222	68
4	4,770	2,168	522	159	12,370	5,623	242	74
5	4,400	2,000	565	172	11,420	5,191	262	80
6	4,090	1,859	609	186	10,610	4,823	282	86

CH165A-25120-01

12.0 cu in. Motor (197cc)
3,000 PSI (206 bar) @ 170 gpm (643 lpm)
Wire Rope Diameter: .75 in.

	LINE PULL		LINE SPEED	
	LB	KG	FPM	MPM
1	16,500	7,500	434	132
2	14,850	6,750	482	147
3	13,500	6,136	530	162
4	12,370	5,623	579	176
5	11,420	5,191	627	191
6	10,610	4,823	675	206

CH165A-26090-02

9.02 cu in. Motor (148cc)
3,000 PSI (206 bar) @ 125 gpm (473 lpm)
Wire Rope Diameter: .75 in.

	LINE PULL		LINE SPEED	
	LB	KG	FPM	MPM
1	12,450	5,659	400	122
2	11,210	5,095	444	135
3	10,190	4,632	489	149
4	9,340	4,245	533	162
5	8,620	3,918	578	176
6	8,000	3,636	622	190

CH165A-26064/128-02 Two Speed Motor

6.38 cu in. (105 cc) Low Speed 12.75 cu in. (209 cc) Low Speed
2,700 PSI (184 bar) @ 85 gpm (322 lpm)
Wire Rope Diameter: .75 in.

	HIGH SPEED				LOW SPEED			
	LB	KG	FPM	MPM	LB	KG	FPM	MPM
1	6,360	2,891	376	115	16,500	7,500	174	53
2	5,720	2,600	418	127	14,850	6,750	194	59
3	5,200	2,364	460	140	13,500	6,136	213	65
4	4,770	2,168	502	153	12,370	5,623	233	71
5	4,400	2,000	543	165	11,420	5,191	252	77
6	4,090	1,859	585	178	10,610	4,823	272	83

CH165A-26110-02

11.0 cu in. Motor (181cc)
3,000 PSI (206 bar) @ 155 gpm (587 lpm)
Wire Rope Diameter: .75 in.

	LINE PULL		LINE SPEED	
	LB	KG	FPM	MPM
1	15,640	7,109	413	126
2	14,080	6,400	459	140
3	12,800	5,818	504	154
4	11,730	5,332	550	168
5	10,830	4,923	596	182
6	10,050	4,568	642	196

CH165A-26120-02

12.0 cu in. Motor (197cc)
3,000 PSI (206 bar) @ 170 gpm (643 lpm)
Wire Rope Diameter: .75 in.

	LINE PULL		LINE SPEED	
	LB	KG	FPM	MPM
1	16,500	7,500	417	127
2	14,850	6,750	464	141
3	13,500	6,136	510	155
4	12,370	5,623	556	169
5	11,420	5,191	603	184
6	10,610	4,823	649	198

Wire Rope Storage Capacities

	01 DRUM (.75 in. ROPE)		01 DRUM (.875 in. ROPE)		02 DRUM (.75 in. ROPE)		02 DRUM (.875 in. ROPE)	
	FT	M	FT	M	FT	M	FT	M
1	80	24	69	21	150	46	130	40
2	169	52	147	45	317	97	277	84
3	266	81	234	71	501	153	440	134
4	372	113	330	101	702	214	620	189
5	487	148	434	132	919	280	817	249
6	611	186	XXXX	XXXX	1,153	351	XXXX	XXXX

Model Number Explanation

CH 165 A - 25 090 - 01 - 1

- CH DESIGNATES CONSTRUCTION HOIST
- 165 DESIGNATES MODEL SIZE
- A DESIGNATES MODEL SERIES RELATING TO DESIGN CHANGES
- 25 DESIGNATES TOTAL GEAR REDUCTION
- 090 DESIGNATES HYDRAULIC MOTOR DISPLACEMENT (120 - 12.0 cu in./rev)
- 01 DESIGNATES DRUM SIZE
- 1 DESIGNATES SPECIAL OPTION (Personnel Handling)