

BRADEN
CARCO
Gearmatic

PACCAR WINCH

COMPANY & PRODUCT OVERVIEW

KAIZEN
SYSTEMS INT. LLC

FACTORY DISTRIBUTOR

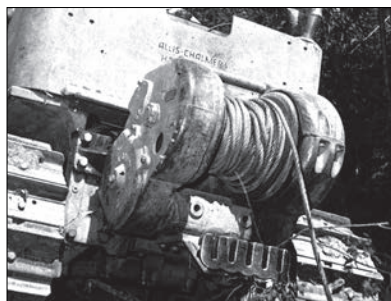
www.kaizen.com.co
www.kaizennipalis.com
Export, Sales and Support
Kaizen@kaizen.com.co
Miami, USA

HISTORY & VALUES



Glenn Braden started Braden Steel Corporation in 1924 in Tulsa, Oklahoma. The company began with production of drive heads used for drilling oil wells. In 1927, Mr. Braden's close ties to the automotive industry led to the introduction of the company's first truck mounted oil field winch.

By 1936, the company had changed hands and was renamed Braden Winch. Ten years later, the company headquarters moved to a larger facility in Broken Arrow, Oklahoma.



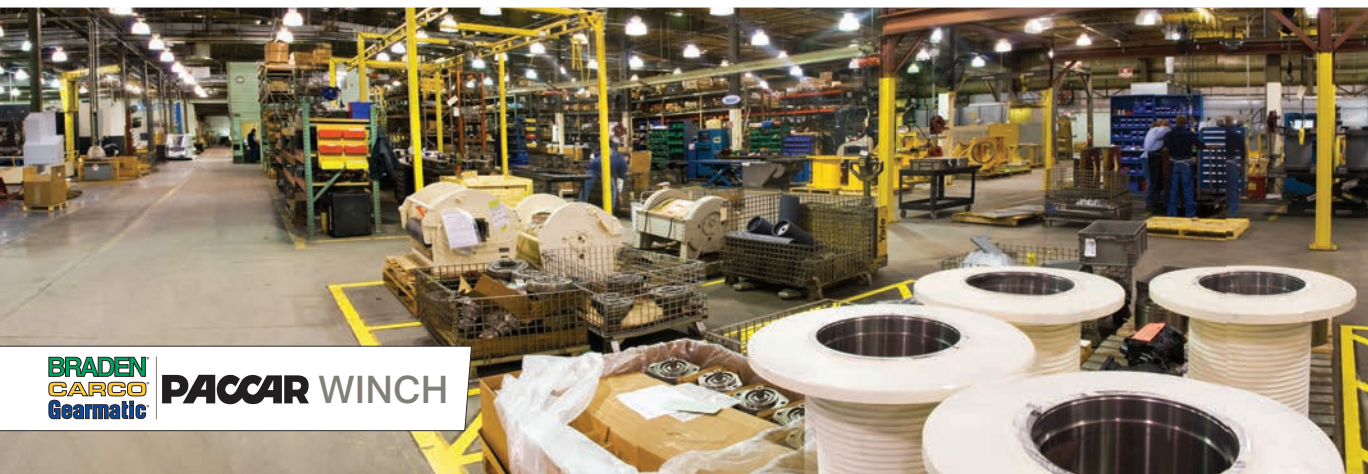
While Braden was making an impact in the center of the country, CARCO, a brand owned by railcar and metal manufacturing company Pacific Car and Foundry, was building a name in the northwest. In 1932, CARCO introduced a winch specifically for use in the American Northwest's timber industry.

As the railcar industry shifted, CARCO's focus became supplying timber operators with winches and hauling tackle. CARCO winch products were also developed alongside the world's first track driven dozer's.



Gearmatic began as a manufacturer of power transmissions in Vancouver, B.C. in late 1946. Gearmatic is known for pioneering planetary gear systems and top quality, long-lasting products. This high value and durability made Gearmatic a market leader for innovation in fishing, logging, forestry and drilling.

PACCAR brought these three companies together in 1983 at Braden's main manufacturing facility. This collaboration created a synergy of knowledge and experience, making PACCAR Winch the standard in winch, hoist and drive systems.

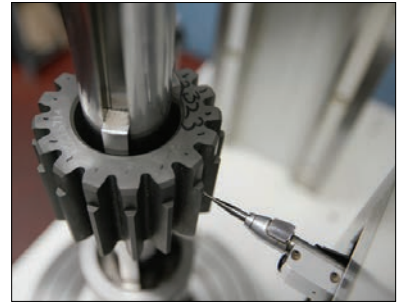


BRADEN
CARCO
Gearmatic

PACCAR WINCH

Exceptional Quality and Commitment to the Future

Exceptional quality is the cornerstone of PACCAR. Design, construction and service are never compromised. PACCAR Winch products are certified for specific applications according to national and international standards.



Engineering Expertise

Our research and development engineers use proven industry and application knowledge alongside the latest design technology. Process protocols such as Design for Six Sigma (DFSS) ensure efficient use of resources, while Pro-E and Finite Element Analysis (FEA) provide precision component designs, robust assemblies and rugged products. Additionally our engineering staff conducts comprehensive testing to assure all products and components perform to customer specifications.

People, Process and Support

Our manufacturing, assembly, sale and service have decades of individual experience. Employees are the true backbone of PACCAR Winch. They define, measure, analyze, improve and control each process. PACCAR Winch products are supported by an entire department, dedicated to providing the best parts, service, and technical support in the industry.



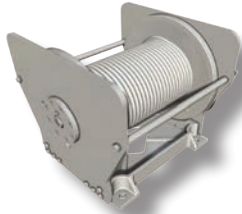
PRODUCT LINE MATRIX

PLANETARY HOISTS



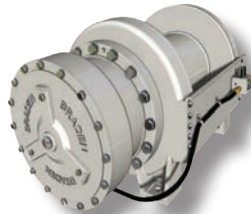
BG SERIES

BG3B
BG4B
BG6B
BG8B



PD SERIES

PD7C
PD10E
PD12C
PD15B
PD17A
PD21A



CH SERIES

CH165A
CH175B
CH210A
CH230B
CH280A
CH400B
CH500B
CH640A



DRH SERIES

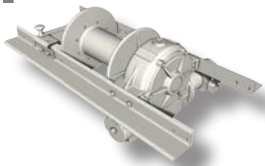
DRH45A



GH

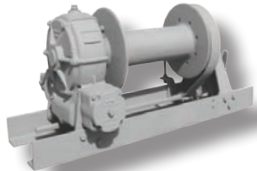
C
C

RECOVERY PRODUCTS



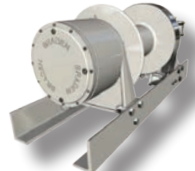
LOW-MOUNT

HU8
ALU2/AHLU2
LGU2/HGU2
AMSU3/AHSU3
ALGU2/AHGU2
AMGU5/AHGU5
AMU7/AHU7
AMSU10/AHSU10
AMSU12/AHSU12P



UPRIGHT

AMS3/AHS3
AMS7/AHS7
AMS10/AHS10
AMS20/AHS20P
MS30/HS30P
MS50/HS50P
W150



PLANETARY

GPH40A
H20R
H55R
PD18C
HP35A
HP50B/HP65A
HP75A/HP80A
HP100B/HP125B
HP130A/HP160A
RW300A

UTILITY



UTILITY/INDUSTRY

BP200B
PCD24B
PD18C
HUP30B



BU

P
H
P
P
P
AH

DRIVES

AIR WINCHES



H SERIES

GH15C
GH30B
GH50



PLANETARY GEAR

SD20B
SD40C
SD66
SD80B
SD110
HD60B
HD80B
HD110



WORM GEAR

SD-SWING
LB-LIFTBOAT
RD-REDUCER
WD-WHEEL
TD-TRACK
400B
900C
1200C
1400B



AU8-3
BR30B
WR30
WR30-LS
WR50-LS
WR50

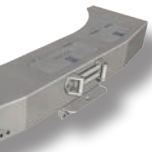


BA SERIES

BA2A
BA3A
BA5A

PRODUCTS

TRACTOR WINCHES



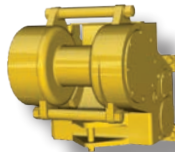
JUMPER

CD24B
UP12A
PD18C
PD18D
PD35A
GU5-12



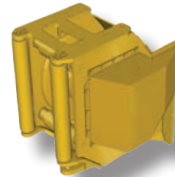
UTILITY DRIVES

BD12A (DIGGER)
WR30 (SWING DRIVE)



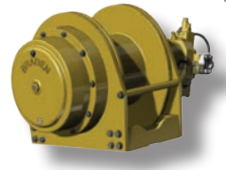
MECHANICAL

C500
C503 SKIDDER
50B-PA55
70A-PA56
525/545
527 SKIDDER



HYDRAULIC

H40
H50
H60H85
H90
H110
H140
H200
SKW40A



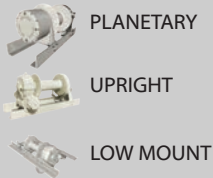
PIPELAYERS

SB18
SB25

PRODUCT APPLICATIONS



Oil & Gas



PLANETARY

UPRIGHT

LOW MOUNT



Crane



PD SERIES

CH SERIES

DRH SERIES



Utility



PD SERIES

BG SERIES

BUMPER

UTILITY



Trailer



LOW MOUNT



Offshore



CH SERIES

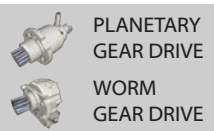
PD SERIES

BG SERIES

BA SERIES



SWING DRIVE



PLANETARY
GEAR DRIVE

WORM
GEAR DRIVE



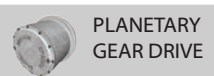
LIFT BOAT



PLANETARY
GEAR DRIVE



TRACK DRIVE



PLANETARY
GEAR DRIVE



DIGGER DRIVE



DIGGER
DRIVES



Tail Winch



MECHANICAL &
HYDRAULIC



Marine



GH SERIES



Skidder



MECHANICAL &
HYDRAULIC



Dredging



GH SERIES



Pipelayer



HYDRAULIC



Pipelayer



GH SERIES



**THE STANDARD IN WINCH, HOIST
AND DRIVE APPLICATIONS**

PACCAR Winch has and continues to be the standard in high quality, application-specific gear driven systems. We take pride in providing customers with innovative, high quality, safe and durable products that get the job done.

KAIZEN SYSTEMS INTERNATIONAL LLC

AUTHORIZED DISTRIBUTOR

www.airclutch-kaizen.com

Sales and Support:

kaizen@kaizen.com.co

BRADEN[®]
CARCO[®]
Gearmatic[®]

PACCAR WINCH